

# In-office lab testing for chronic conditions

Quick, accurate  
test results  
for improved  
patient outcomes

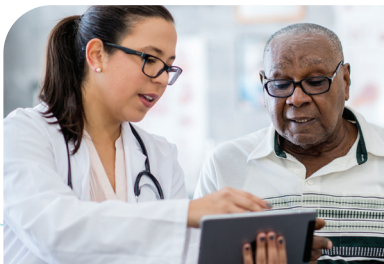


We're as  
dedicated to  
your lab as  
you are.

# Products to help diagnose and monitor **chronic conditions**

Many Americans are at risk for developing a chronic condition at some point in their life. When you test for these conditions in your office instead of sending tests out, you can provide improved care and a better experience for your patients:

- **Reduce the number of office visits** needed for testing, diagnosis and follow-up
- **Make informed decisions** regarding treatment
- **Discuss test results and treatment plans** with patients while they are still in your office
- **Avoid** unnecessary hospital admissions
- **Eliminate or reduce** outsourcing of lab tests and maintain control of test results and related revenue



Around **71%** of total U.S. healthcare spending goes to caring for people **with more than one chronic condition**<sup>1</sup>



Cardiovascular disease is the **leading global cause of death** and accounted for approximately 18.6 million deaths in 2019<sup>3</sup>



**6 in 10 Americans** live with at least one chronic disease, like heart disease and stroke, cancer, or diabetes<sup>2</sup>

**50%** of reported sexually transmitted infection cases occur in **young people** (aged 15 – 24 years)<sup>4</sup>

**1 in 4 Americans** has multiple chronic conditions.



For those aged 65 and older, that number rises to 3 in 4<sup>5</sup>

Diabetes can lead to **heart disease, kidney failure and blindness**<sup>6</sup>



## DIABETES



HemoCue®  
Glucose 201



Abbott  
Afinion 2™



McKesson Consult™  
Urinalysis



Siemens CLINITEK  
Status®+



Siemens DCA®  
Vantage

## CARDIAC HEALTH

Abbott  
Point  
of Care  
i-STAT®



Abbott  
Point  
of Care  
Piccolo  
Xpress®

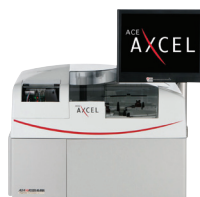


Abbott Cholestech LDX®



Beckman Coulter Access® 2\*

Alfa  
Wassermann  
ACE Axcel®\*



Quidel®  
Triage



Roche  
CoaguChek®

## SEXUAL HEALTH



Abbott  
Determine™  
Rapid Test



BD MAX™†



Cepheid GeneXpert®†



OSOM® Trichomonas  
Rapid Test



OSOM® BVBLUE®



Quidel Solana®†

For more  
information, visit  
[mms.mckesson.com/  
laboratory-services](https://mms.mckesson.com/laboratory-services)  
or ask your McKesson  
Medical-Surgical  
Account Manager

\*CLIA moderately complex †CLIA moderately complex molecular analyzer

**McKesson Medical-Surgical**  
**9954 Mayland Drive**  
**Richmond, VA 23233**  
***mms.mckesson.com***

1- [www.cdc.gov/chronicdisease/about/multiple-chronic.htm](http://www.cdc.gov/chronicdisease/about/multiple-chronic.htm)

2- [www.cdc.gov/chronicdisease/index.htm](http://www.cdc.gov/chronicdisease/index.htm)

3- [www.heart.org/-/media/phd-files-2/science-news/2/2021-heart-and-stroke-stat-update/2021\\_heart\\_disease\\_and\\_stroke\\_statistics\\_update\\_fact\\_sheet\\_at\\_a\\_glance.pdf](http://www.heart.org/-/media/phd-files-2/science-news/2/2021-heart-and-stroke-stat-update/2021_heart_disease_and_stroke_statistics_update_fact_sheet_at_a_glance.pdf)

4- [www.cdc.gov/std/life-stages-populations/adolescents-youngadults.htm](http://www.cdc.gov/std/life-stages-populations/adolescents-youngadults.htm)

5- [www.cdc.gov/chronicdisease/about/multiple-chronic.htm](http://www.cdc.gov/chronicdisease/about/multiple-chronic.htm)

6- [www.cdc.gov/chronicdisease/about/costs/index.htm](http://www.cdc.gov/chronicdisease/about/costs/index.htm)

The product information contained in this document, including the product images and additional product materials, was collected from various supplier sources.

All product claims and specifications are those of the product suppliers, not McKesson Medical-Surgical or its affiliates ("McKesson") and have not been independently verified by McKesson. McKesson is not responsible for errors or omissions in the product information. The properties of a product may change or be inaccurate following the posting or printing of the product information in the document, either in the print or online version. Caution should be exercised when using or purchasing any products from McKesson's online or print documents by closely examining the product packaging and the labeling prior to use. Due to product changes, information listed in this document is subject to change without notice. This information is placed solely for your convenience in ordering and McKesson disclaims all responsibility for its completeness and accuracy, whether or not the inaccuracy or incompleteness is due to fault or error by McKesson.

All trademarks and registered trademarks are the property of their respective owners.

© 2022 McKesson Medical-Surgical Inc. All rights reserved. 2021\_1549901